

## Maths

*The number system is used to represent and compare relationships between numbers and quantities.*

**Number:** Addition & Subtraction (within 10)

**Geometry:** Shape

**Number:** Place Value (within 20)



## **Year 1**

Term 1 b

### **Sustainable Goal:**

1. No Poverty
11. Sustainable Cities and Communities



## **Health and Well-being**

*Healthy relationships are fundamental to our sense of belonging and well-being.*

### **PHSE – Relationships**

Recognise and discuss likes/dislikes, what is fair/unfair and what is right/wrong.

**Remembrance - 11th Nov**

## **Literacy, Language and Communication**

*Literature fires imaginations and inspires creativity.*

**Class anchor :** The Three Little Pigs

*Learners who speak and write effectively are prepared to play a full part in life and work*  
Opportunities to write and present through exploration of quality texts and talk for writing approach:

**WRITING TO ENTERTAIN - Narrative:** The Three Little Pigs

**WRITING TO INFORM - Letter:**  
Letter about building a house

**To Perform - POETRY:** Christmas

*Learning about identity and culture through languages prepares learners to be citizens of the world.*

**Specialist lessons:** EAL, French, German daily lessons

## **Science and Technology**

*Understanding the atomic nature of matter and how it shapes the world.*

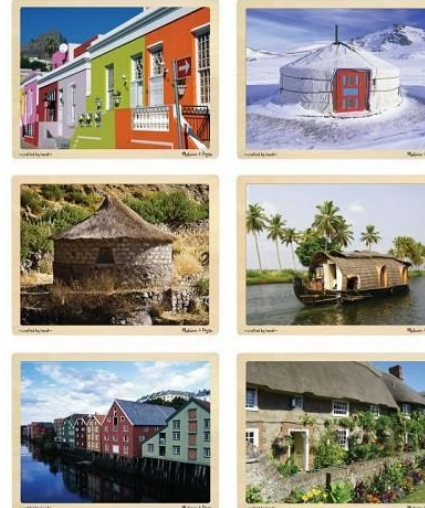
### **Seasonal Changes**

observe changes across the four seasons

### **Everyday Materials**

distinguish between an objects and materials  
identify and name a variety of everyday materials  
describe the simple physical properties of everyday materials  
compare and classify materials.

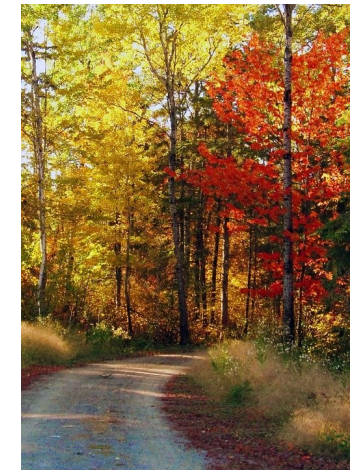
**Can we build a new house for the Three Little Pigs, to keep the Wolf out?**



## **Visitors/Trips/Events**

- Walk into Brunsummerheide to see signs of autumn. What has happening? What is Changing?  
Collect autumn items to create an autumn collage.

- Walk around local area to see the houses. What are they like? Shape? Windows?



## **Humanities**

*Human societies are complex and diverse and are shaped by human actions and beliefs.*

Use basic geographical vocabulary to refer to local & familiar features:

Walk around local area. Compare to homes from our own communities and around the world.

Changes in living memory (linked to aspects of national life where appropriate):  
Homes I/my family have lived in.

## **Expressive Arts**

*Exploration through and of the Expressive Arts deepens our artistic knowledge and contributes to our understanding of identities, cultures and societies.*

Dali—Birds—hot and cold colours

Paul Klee—Cats - Abstract

Autumn art collage

Making a strong and waterproof house for the pigs

Poppy Wreath - Remembrance